

S.M.S.L

G1

使用说明书/USER MANUAL



本说明书的内容可能会随版本更改,如有变动,恕不另行通知
The contents of this manual may be changed with the edition, and are subject to change without notice.

Ver 1.0

安全注意事项

- 请将本音响系统安装在通风良好、阴凉、干燥、干净的位置，远离直射阳光热源、振动、灰尘、潮湿或寒冷。
- 只能使用本机指定的电压。使用高于指定数值的电压很危险，而且可能导致火灾，损坏本机或造成人身伤害。对于使用高于指定电压造成的任何损害，我司将不承担任何责任。
- 不要试图自行改造或修理本机。如果需要任何服务，请与销售或者我司客服人员联系。不管有任何理由，都没有打开机壳的必要。
- 如果打算长时间不使用本机（比如度假时），请从墙壁交流电源插座上断开电源线的连接。

重要提示：

本说明书所提到的产品规格和资讯仅供参考。如有内容更新，恕不另行通知。

保修条款

一、服务期限

佛山双木三林科技有限公司承诺产品的良好品质，产品自售出之后7天内正常使用情况下出现故障，客户可以选择退货或者保修（不影响二次销售才可退货）。正常使用一年内出现故障可以免费保修。

二、购买日期以销售商开出的购机发票或收据日期为准，网购可以交易截图为准。

三、有以下情况都不能享受“三包”服务

1. 一切人为因素损坏，包括非正常工作环境下使用或不按照说明书使用。
2. 用户私自拆机、改装、维修。
3. 使用非指定或许可的配件造成损坏的。
4. 机身的QC或保修贴损毁。
5. 不能出示有效购机凭证。
6. 不属于本公司产品。

四、保修方式为送修

此条款只适于中国大陆，其它地区请参考当地销售代理商的规定和国家法规。

特点

- 采用进口通讯级超低相噪SC切10MHz恒温晶振时钟源；
- 出厂软件校准每个时钟的精度到小于 ± 3 ppb！
- 双重保温设计，单独给恒温晶振一个独立空间，并且加入保温措施！
- 超级法拉电容供电，可以使用晶振更加稳定；
- 支持外置9V-15V电源供电；
- 多路高精度线性稳压电源供电；
- 进口箭猪环形变压器供电，超低漏磁；
- 带电源滤波插座，过滤大部分电网干扰；
- 专利自适应电压切换技术；
- 全铝CNC一体成型外壳；
- 10分钟预热提示(仅交流供电)；

技术参数

	BNC连接器	4
时钟输出 (Clock outputs)	输出采样率	10MHz
	输出阻抗	50/75Ω
	输出电平	方波3.3Vp-p
电源供应		AC 100V~240V, 50/60Hz
		DC9V - 15V, 1A
功耗		12W (加热时)
		3W (正常使用时)
OCXO(晶体振荡器)	时钟稳定时间	大约2分钟
		(设备开启后振荡器稳定所需时间)
		即使过了 2 分钟,也会随着烘箱内温度的变化而进行进一步提高稳定性。因此,我们建议在实际使用前让它预热大约 10 分钟。
	频率温度特性	在±3 ppb范围内
	频率精确度	±3 ppb
工作温度		+5°C 至 +35°C
工作湿度范围		5%到 85%(无凝结)
储存温度范围		-20°C到 +55°C
体积		200x47.9x186mm (WxHxD)
重量		1.618kg/3.57lbs

部件介绍



1 指示灯
交流输入(蓝色)
DC输入(红色)

2 10MHz输出

3 10MHz输出

4 10MHz输出

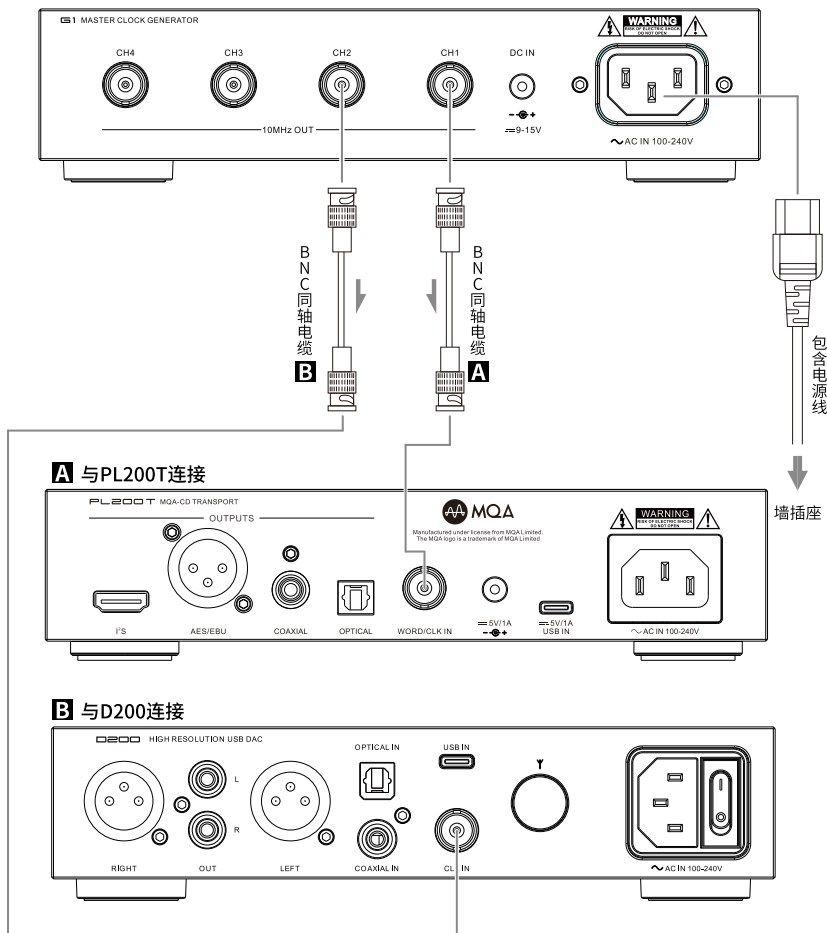
5 10MHz输出

6 直流供电接口*
9V-15V (1A)
5.5x2.1 mm插头

7 交流电输入*
AC 100V~240V

*注意:请不要同时使用AC和DC作为电源输入!

连接设备



Safety Notes

- Install this unit in a well ventilated, cool, dry, clean place-away from direct sunlight, heat sources, vibration, dust, moisture, or cold..
- Use the voltage specified on this unit Only. Using this unit with a higher voltage than specified is dangerous and may cause fire , damage to this unit, or personal injury. Our company will not be held responsible for any damage resulting from the use of this unit with a voltage other than that specified.
- Do not attempt to modify or fix this unit by yourself. Contact alesperson or customer service when any service is needed. The cabinet should never be opened for any reason.
- When not planning to use this unit for long periods of time (i.e. when going on vacation), disconnect the power cable from the AC wall outlet.

Important note:

The product specifications and information mentioned in this manual are for reference only. The content of this manual is subject to change without notice.

Warranty Terms

1.The Term of Service

Foshan Shuangmusanlin Technology Co., Ltd promises to offer good-quality products. If the product is broken in 7 days after purchasing when you use it normally, you can choose to send it back for return, replacement or repairing (only the product does not affect the second sales can be returned). Repairing for free in one year if you use it normally.

2.Date of purchase is in accordance with the date on invoice or receipt used by seller, and if you buy it on line, you can show the screenshot of trade.

3.If an inappropriate usage causes the unit damaged, the warranty will be void. As below.

- All damages by inappropriate use, including using it under non-normal working environment or without following the instructions.
- Dismantling, refitting, repairing by user in private.
- Causing damage by using some fittings instead of the designative or accredited ones.
- Cannot provide credible proof of purchase.

4.Sending it back to our company for repairing.

5.Contact your S.M.S.L Audio reseller for a return or replacement.

Features

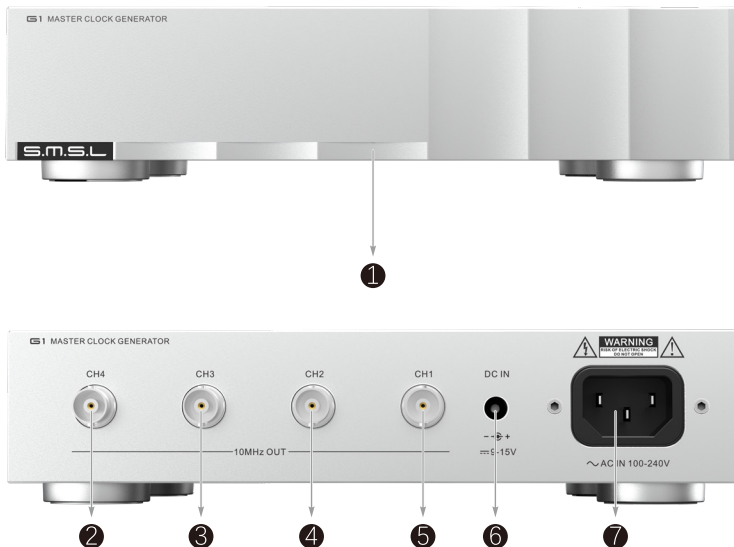
- Communication grade ultra-low phase noise SC cuts 10MHz OCXO clock source;
- Factory software calibrates the frequency accuracy of each clock to less than 3 ppb!
- Double constant temperature design, give OCXO an independent space separately, and keep the temperature!
- Power supply by super farad capacitor makes the crystal oscillator more stable;
- Support external 9V-15V power supply;
- Multiple high-precision linear regulated power supplies supply power;
- Noratel toroidal transformer power supply, ultra-low magnetic leakage;
- Power EMI filter socket, filtering most of the power grid interference;
- Patented adaptive voltage automatic switching technology;
- All-aluminum CNC unit-body chassis;
- 10 minutes warm up display (AC power supply only);

Specifications

	BNC Connector	4
Clock outputs	Output Sample Rate	10MHz
	Output Impedance	50/75Ω
	Output Level	Square wave 3.3Vp-p
Power Supply		AC 100V~240V, 50/60Hz
		DC9V - 15V, 1A
Power Consumption		12W(During Heating)
		3W(Normal Use)
OCXO	Clock stabilization time	About 2 minutes (Oscillator Stabilization Time After Power-On)
	Even after 2 minutes, the oscillator further improves its stability as the temperature inside the oven changes. Therefore, we recommend a warm-up time of approximately 10 minutes prior to actual use.	
	Frequency-Temperature Characteristic	Within ± 3 ppb
	Frequency accuracy	± 3 ppb
Operating Temperature		+5°C to +35°C
Operating Humidity Range		5% to 85%(non-condensing)
Storage Temperature Range		-20°C to +55°C
Dimensions		200x47.9x186mm (WxHxD)
Weight		1.618kg/3.57lbs

SMSL reserves the right to make improvements which may result in specification or feature changes without notice.

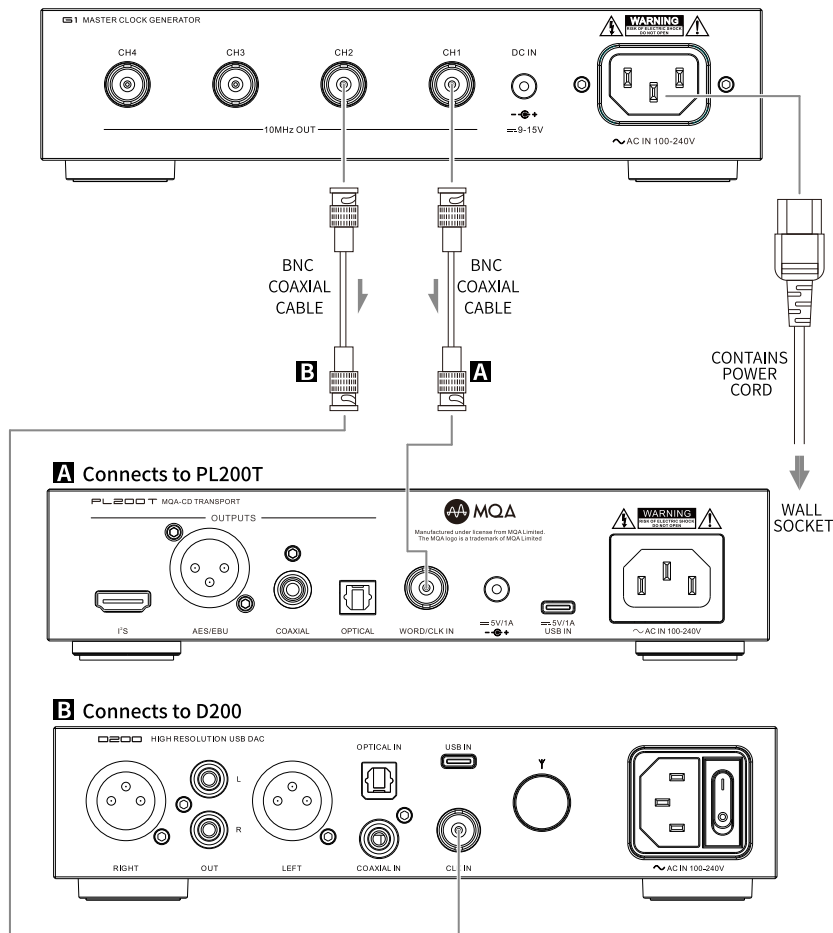
Display Interface and Instructions



- | | | |
|---|------------------------|--|
| 1 Indicator
AC input (blue)
DC input (red) | 2 10MHz outputs | 3 10MHz outputs |
| 4 10MHz outputs | 5 10MHz outputs | 6 DC input*
9V-15V (1A)
5.5x2.1 mm plug |
| 7 AC input*
AC 100V~240V | | |

* Note: Please do not use AC and DC as power input at the same time!

Connecting equipment



S.M.S.L